

The background features two large, stylized letters, 'F' on the left and 'M' on the right, rendered in a dark grey color. The 'F' has a thick vertical stem and a curved top bar. The 'M' has a thick vertical stem and a curved top bar that meets the 'F'. The overall aesthetic is modern and graphic.

DION

WATER · FIRE · ART

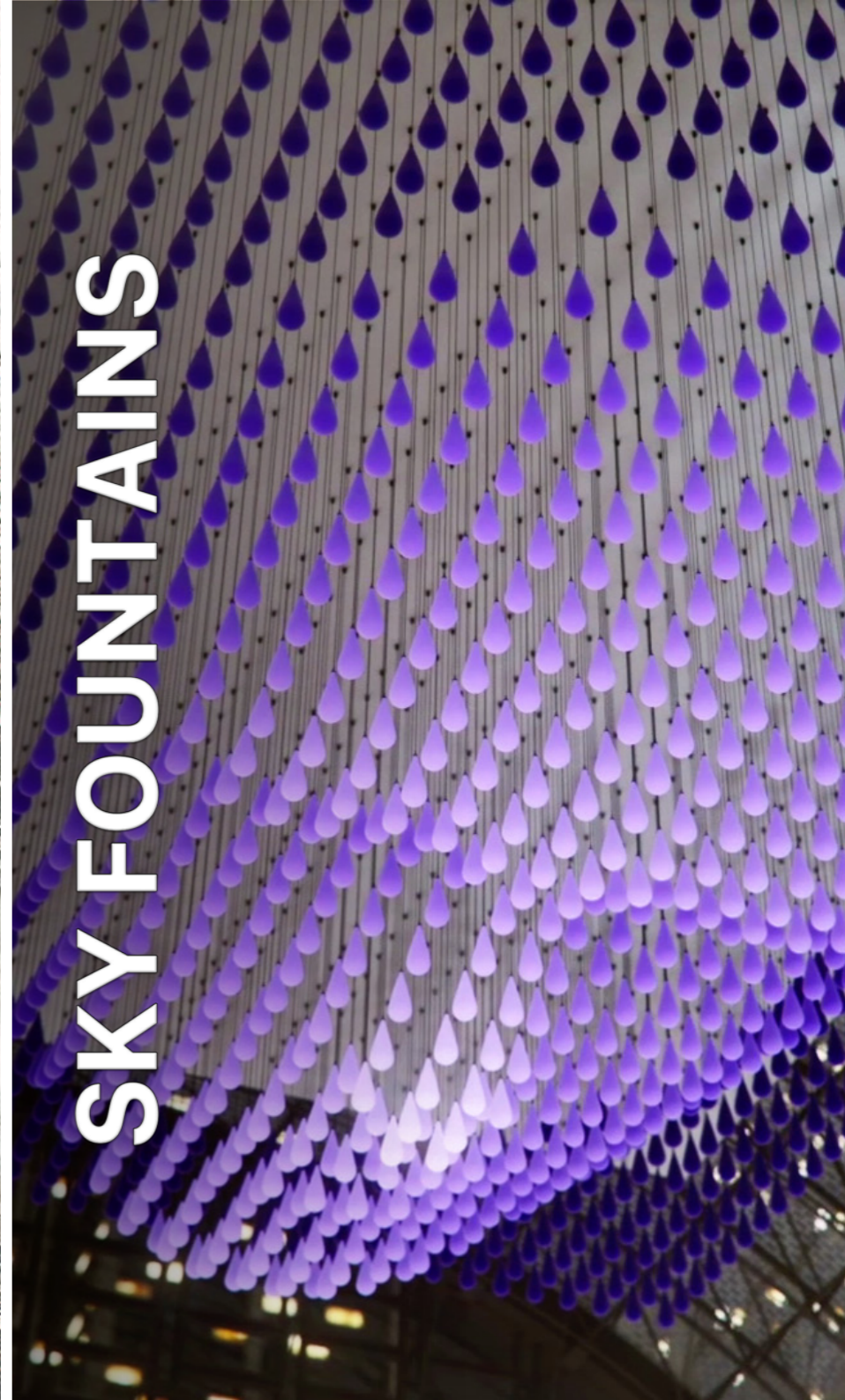
ART INSTALLATIONS



FOUNTAINS



SKY FOUNTAINS

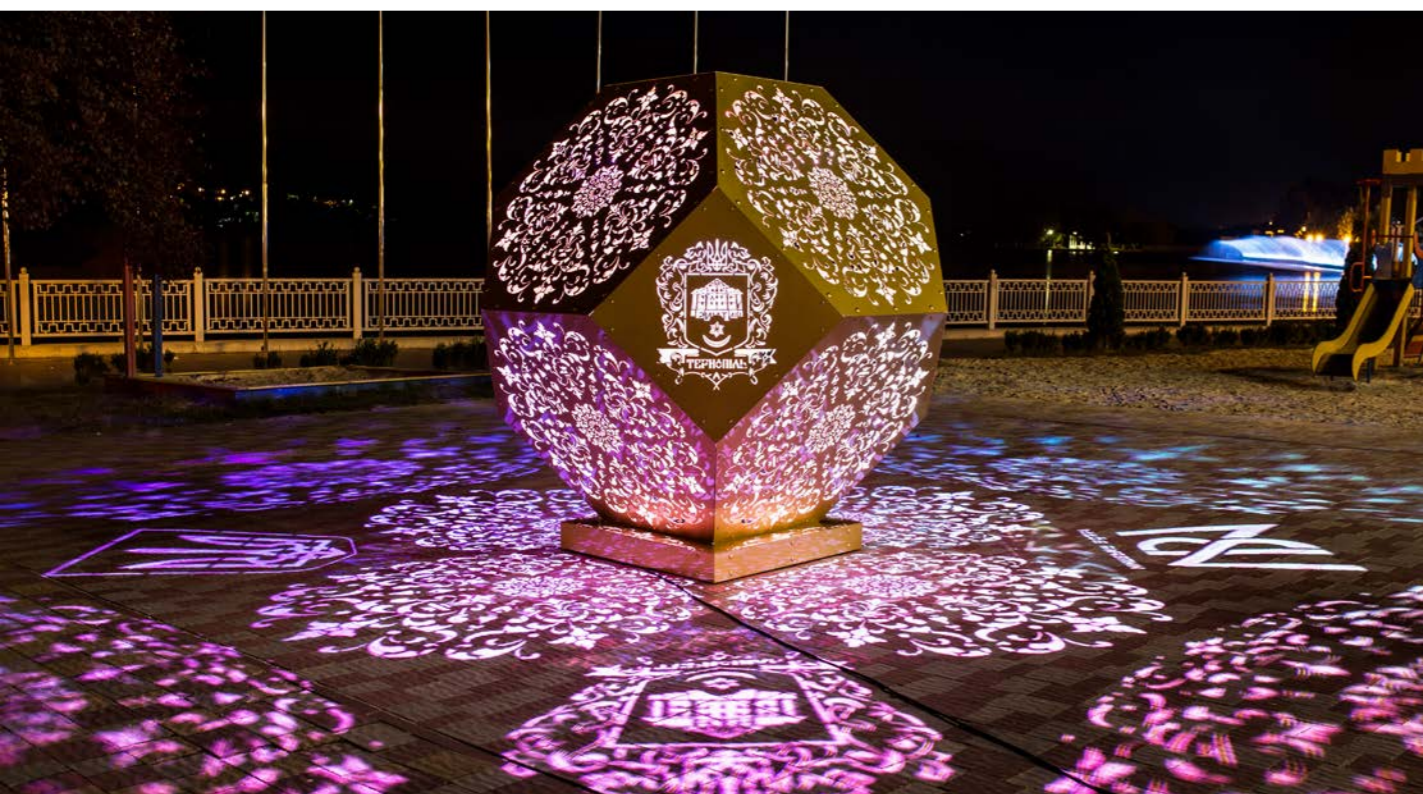


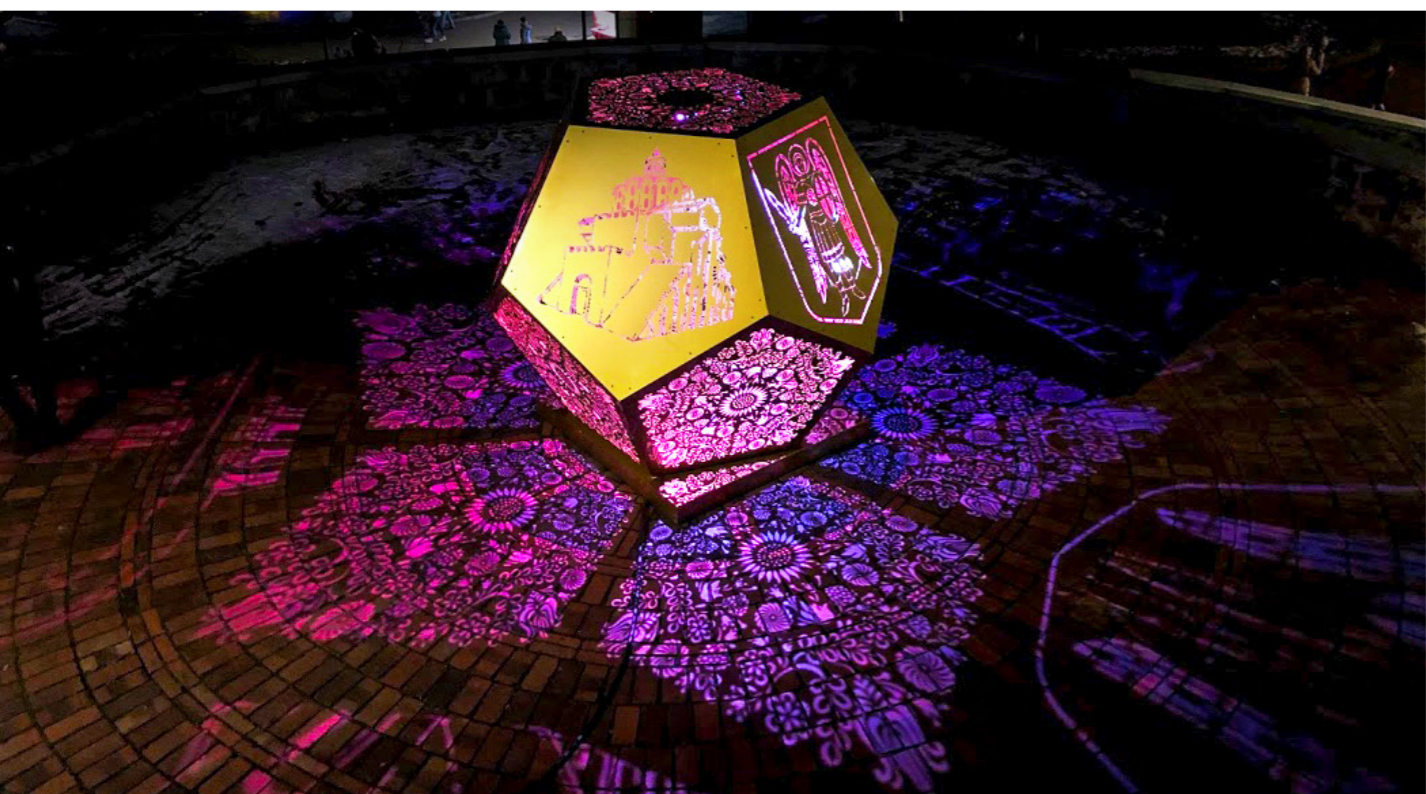
ART INSTALLATIONS









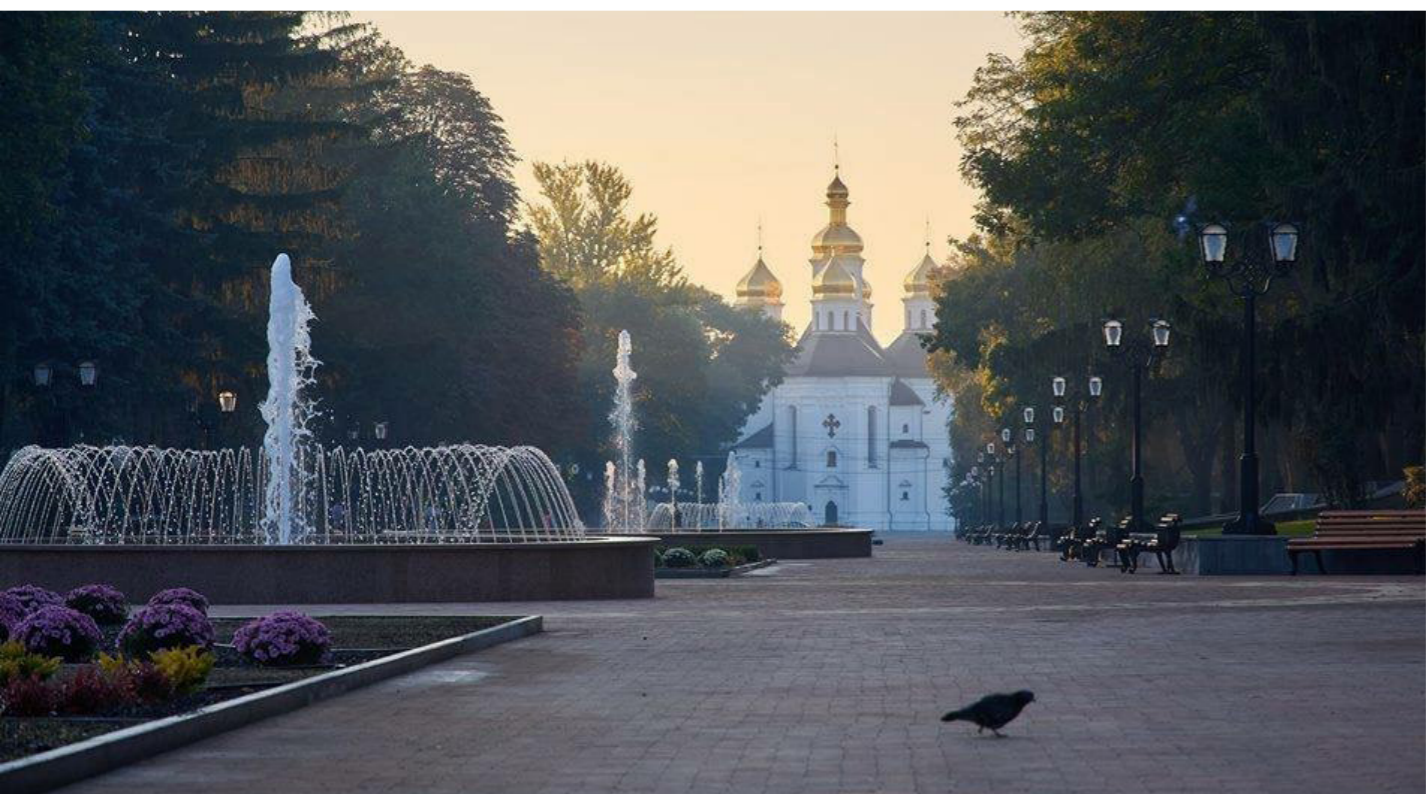




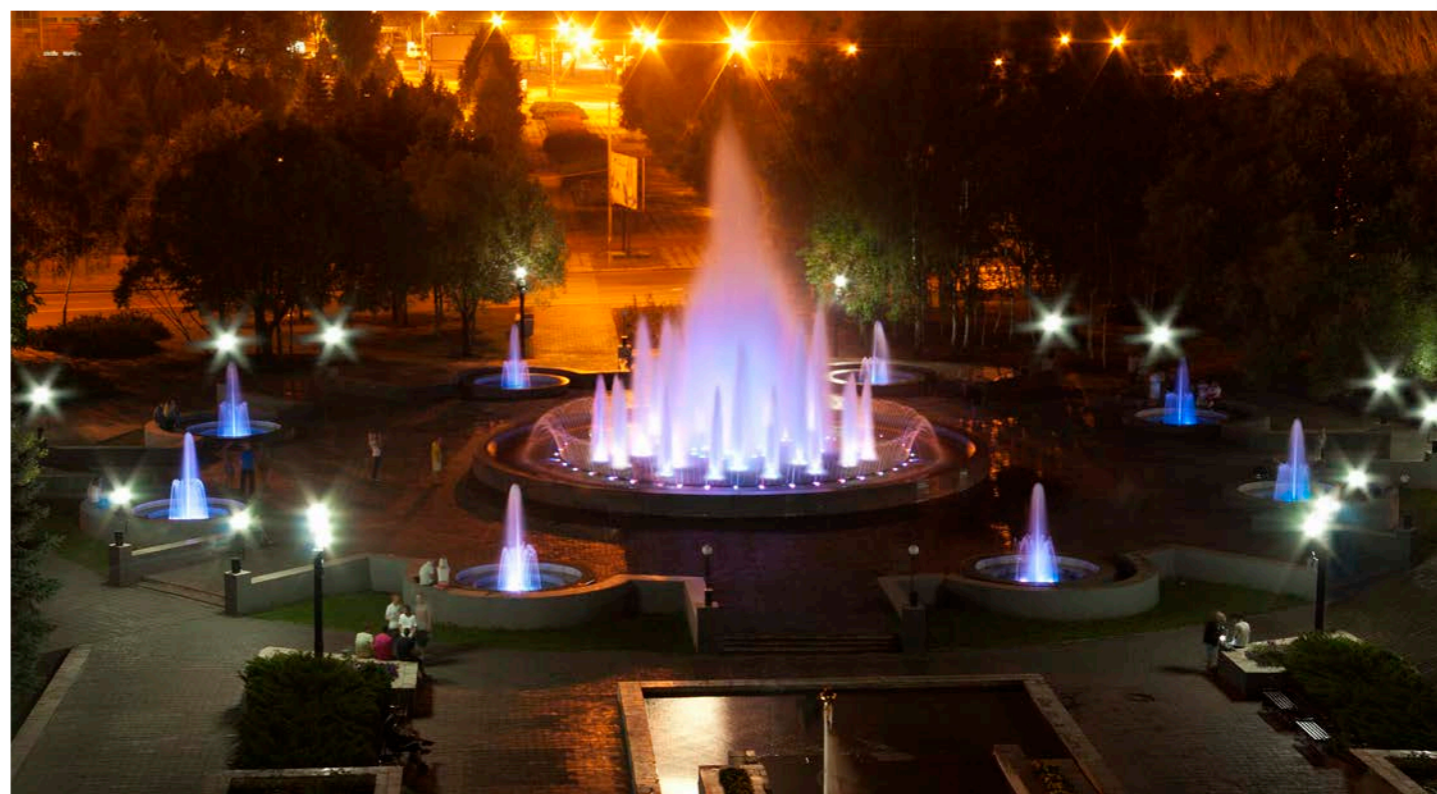


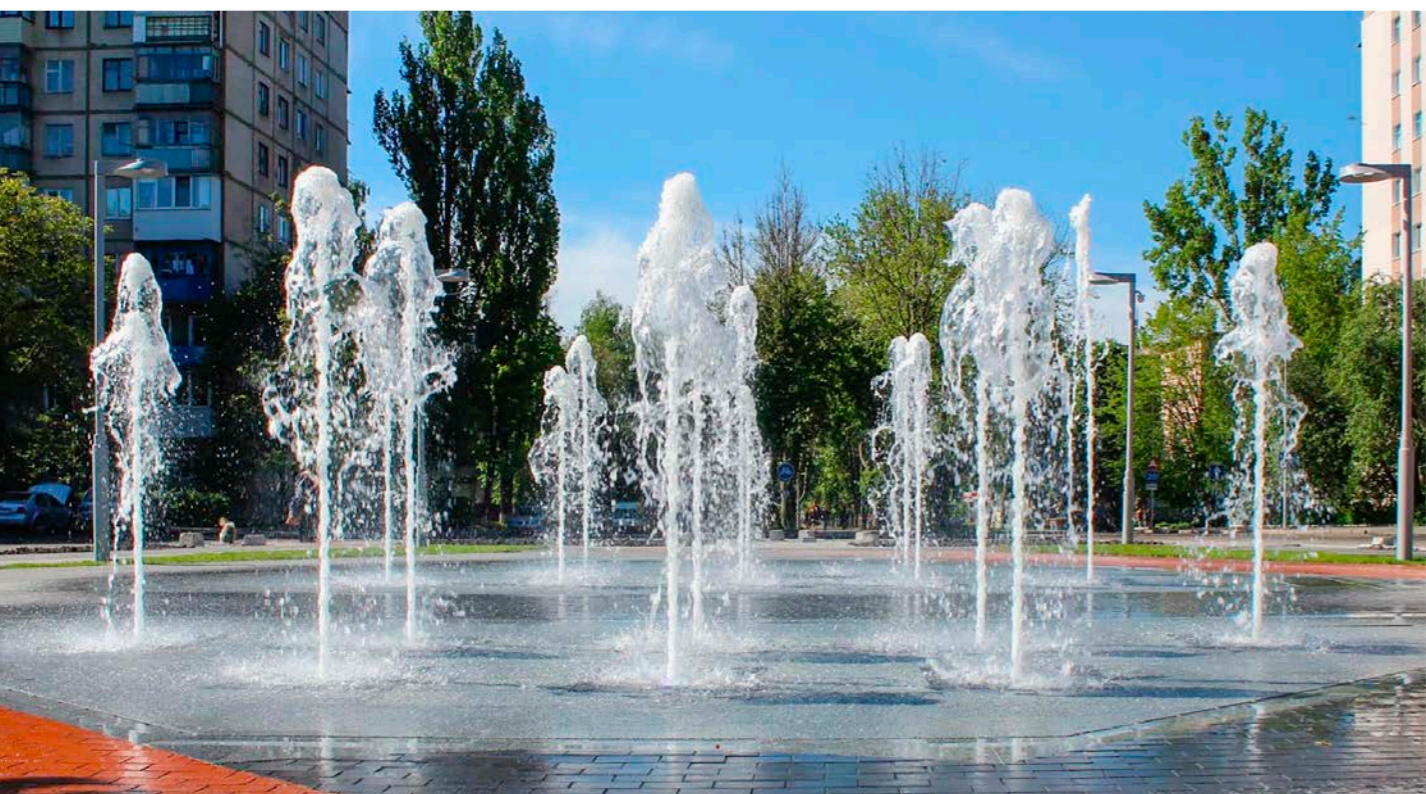
FOUNTAINS







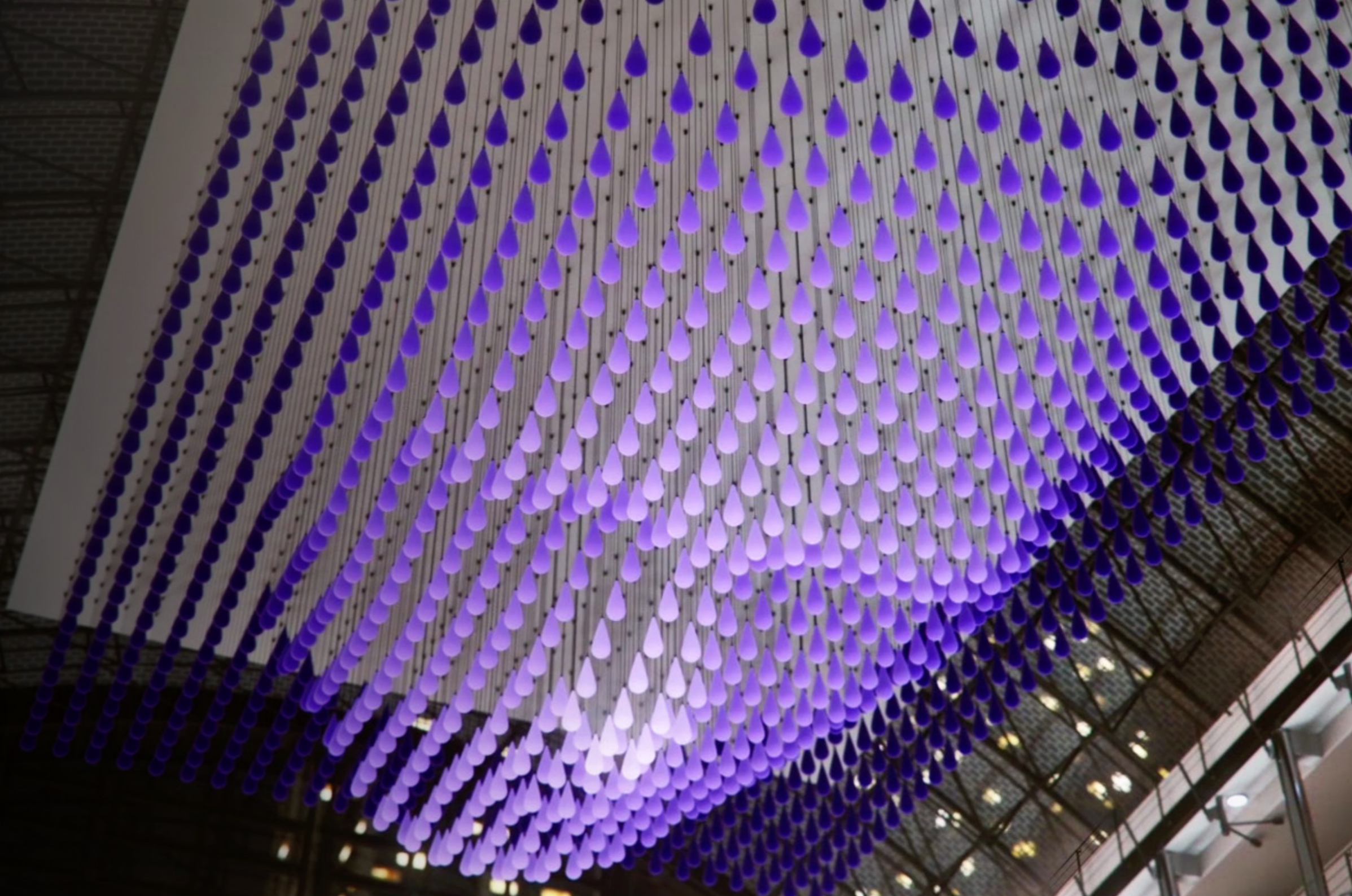


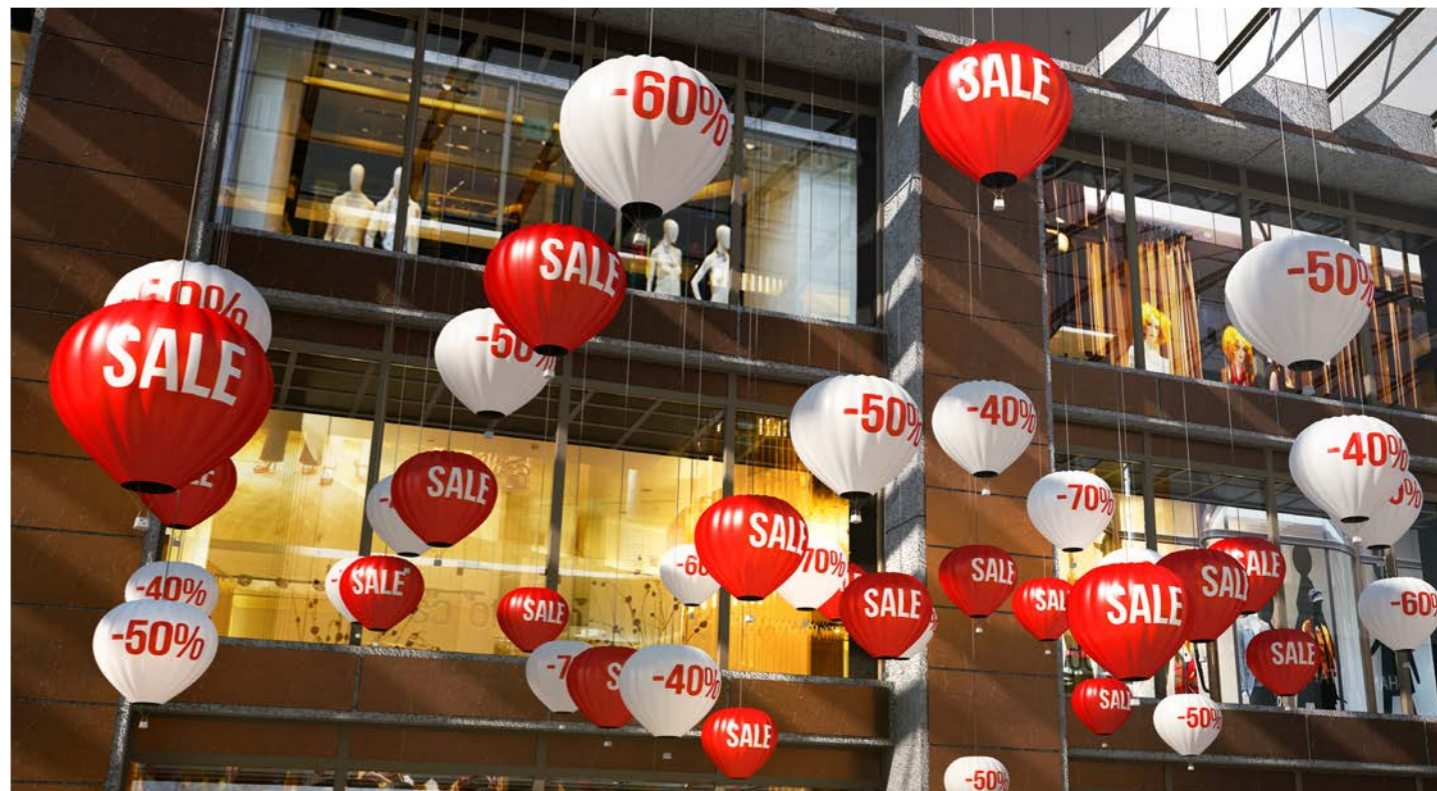
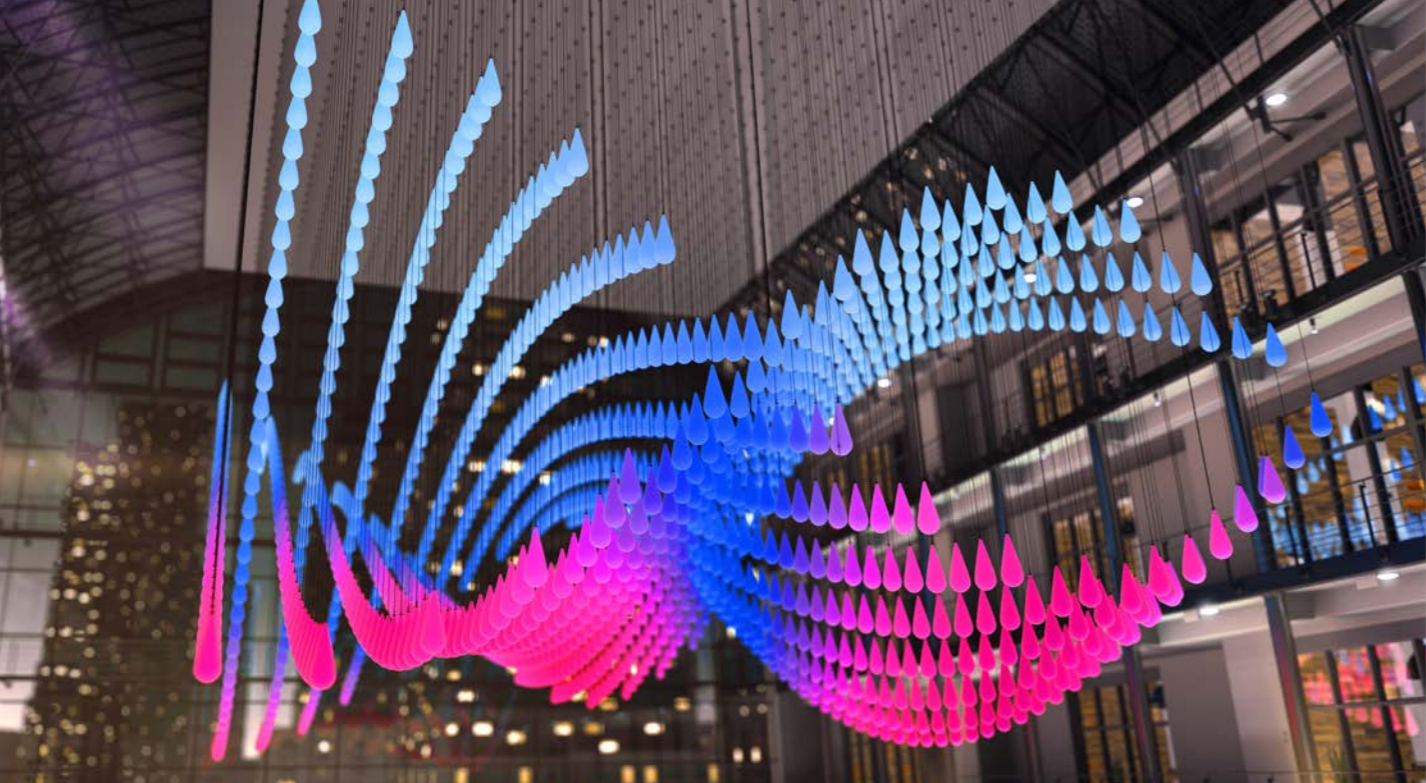


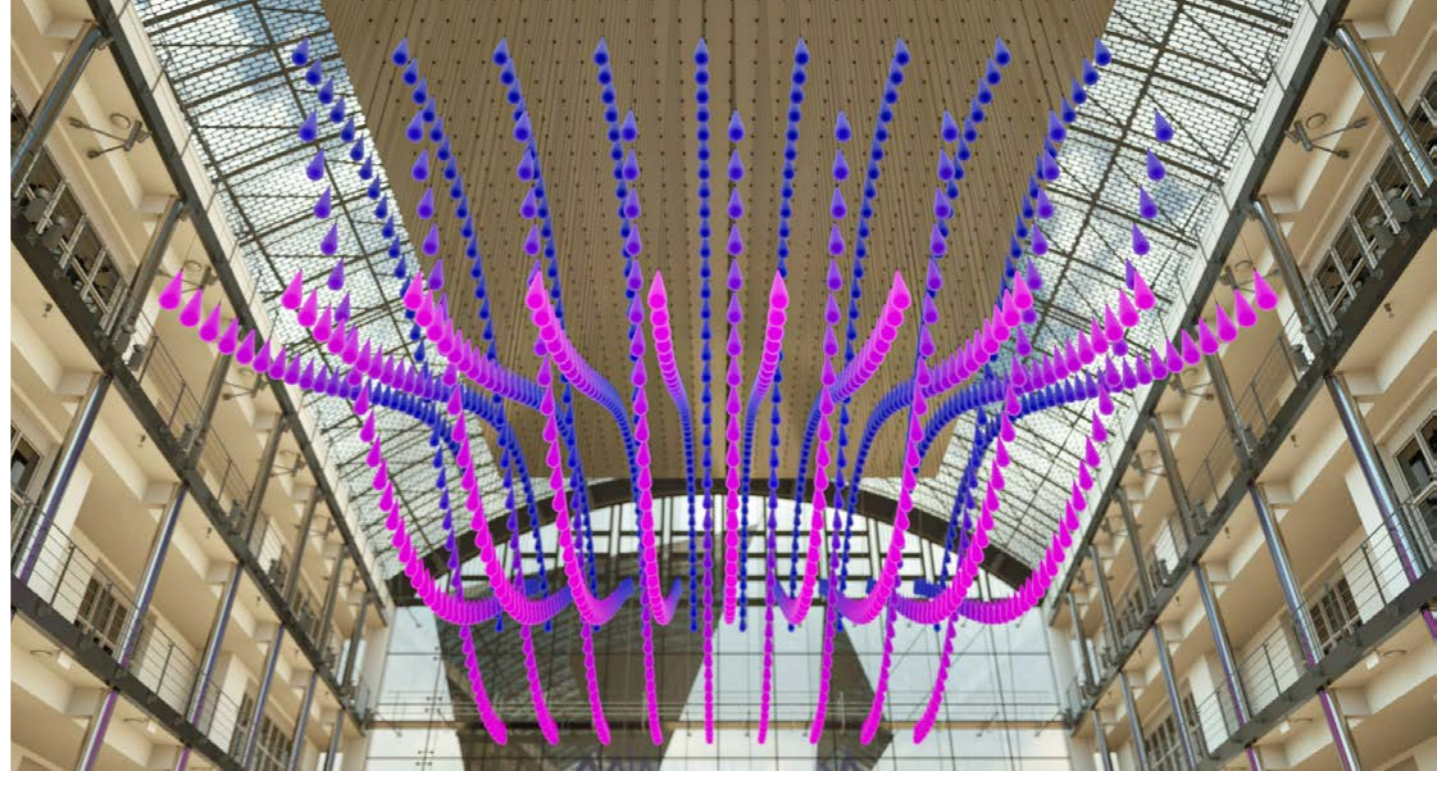




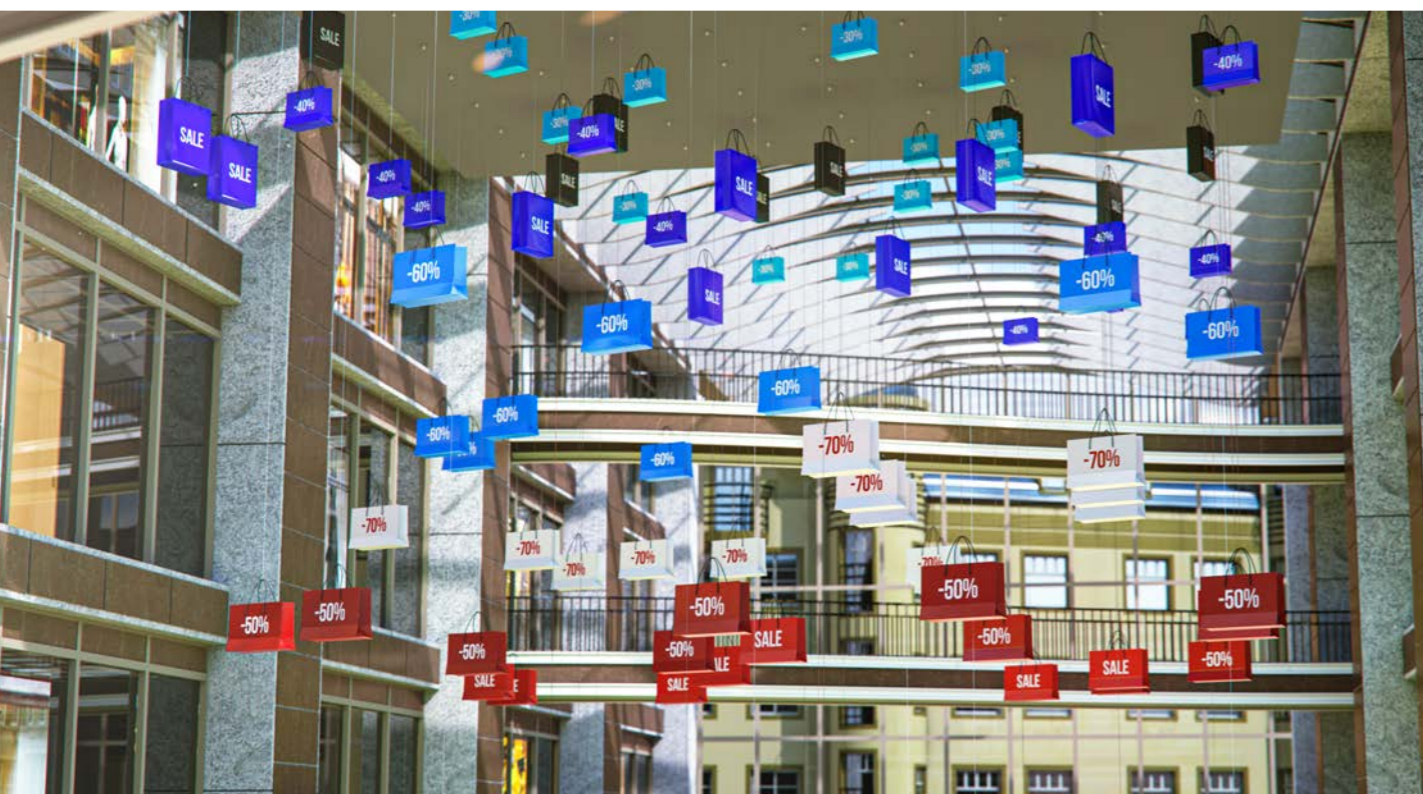
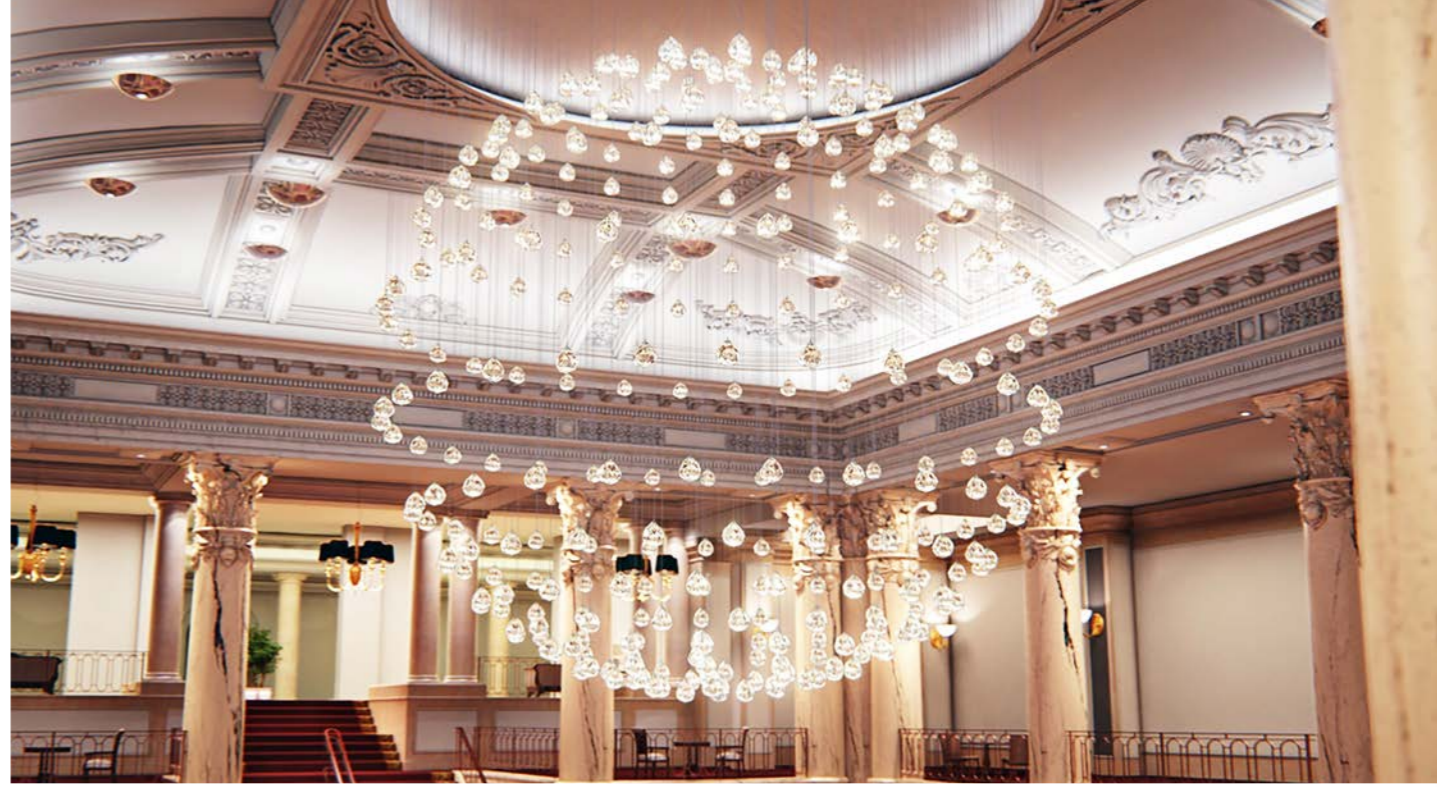
SKY FOUNTAINS

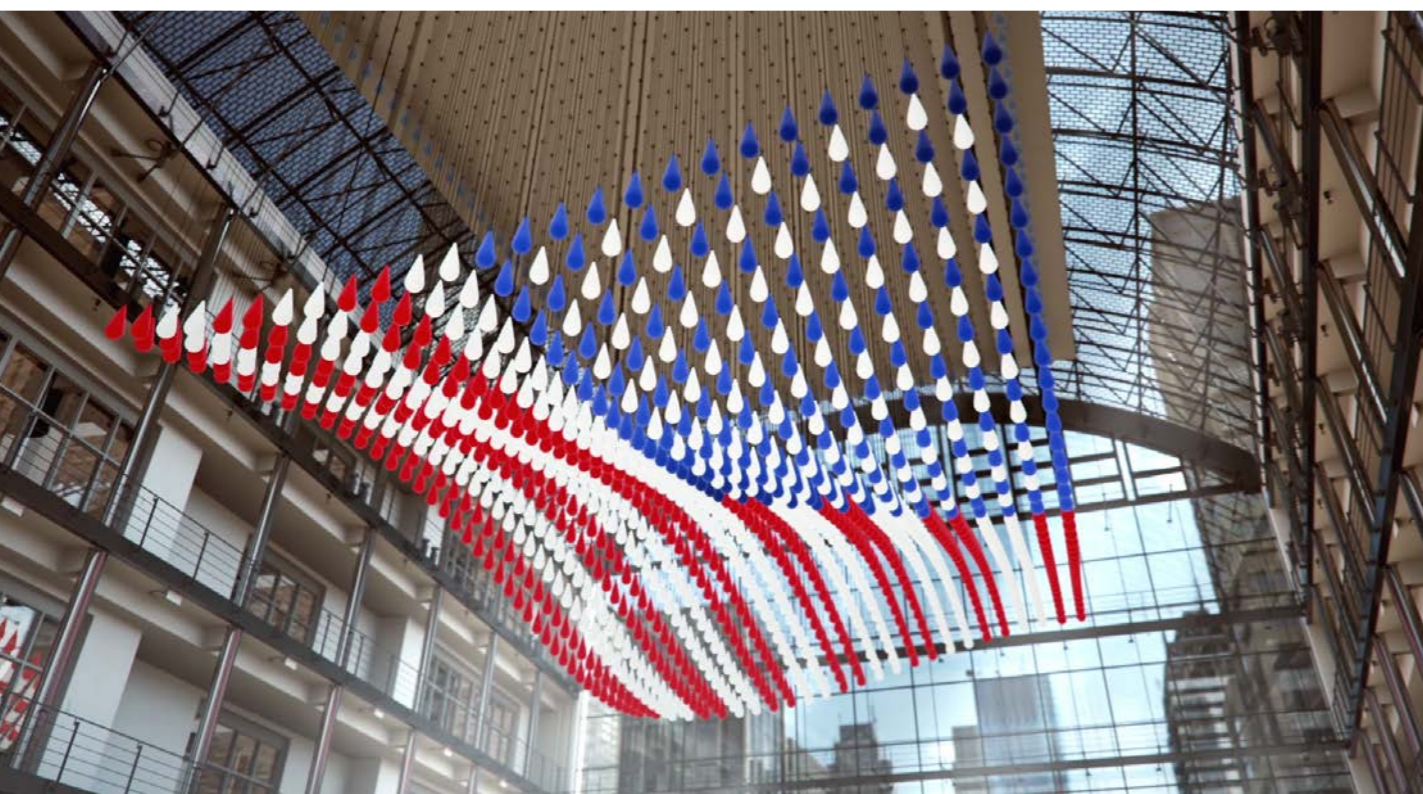


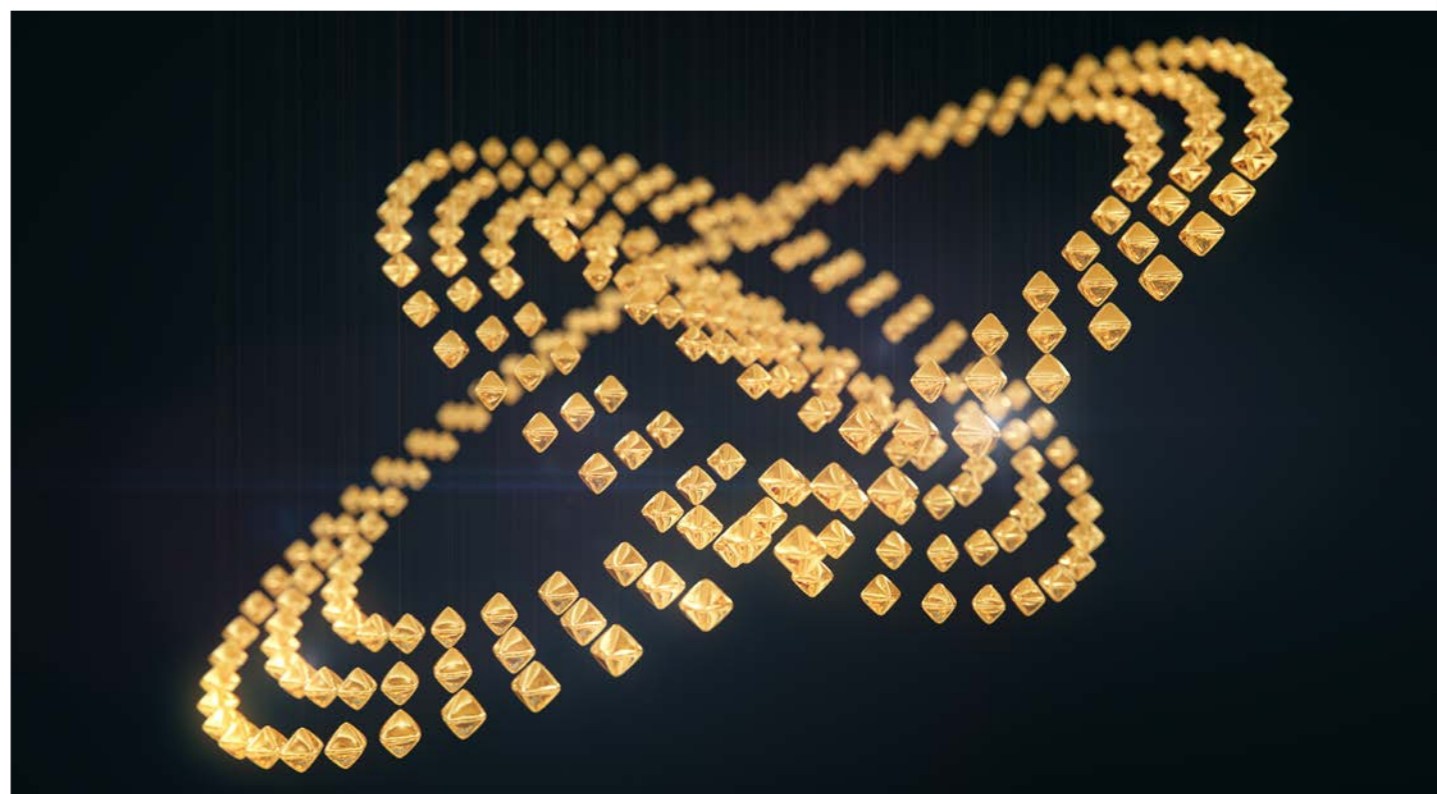
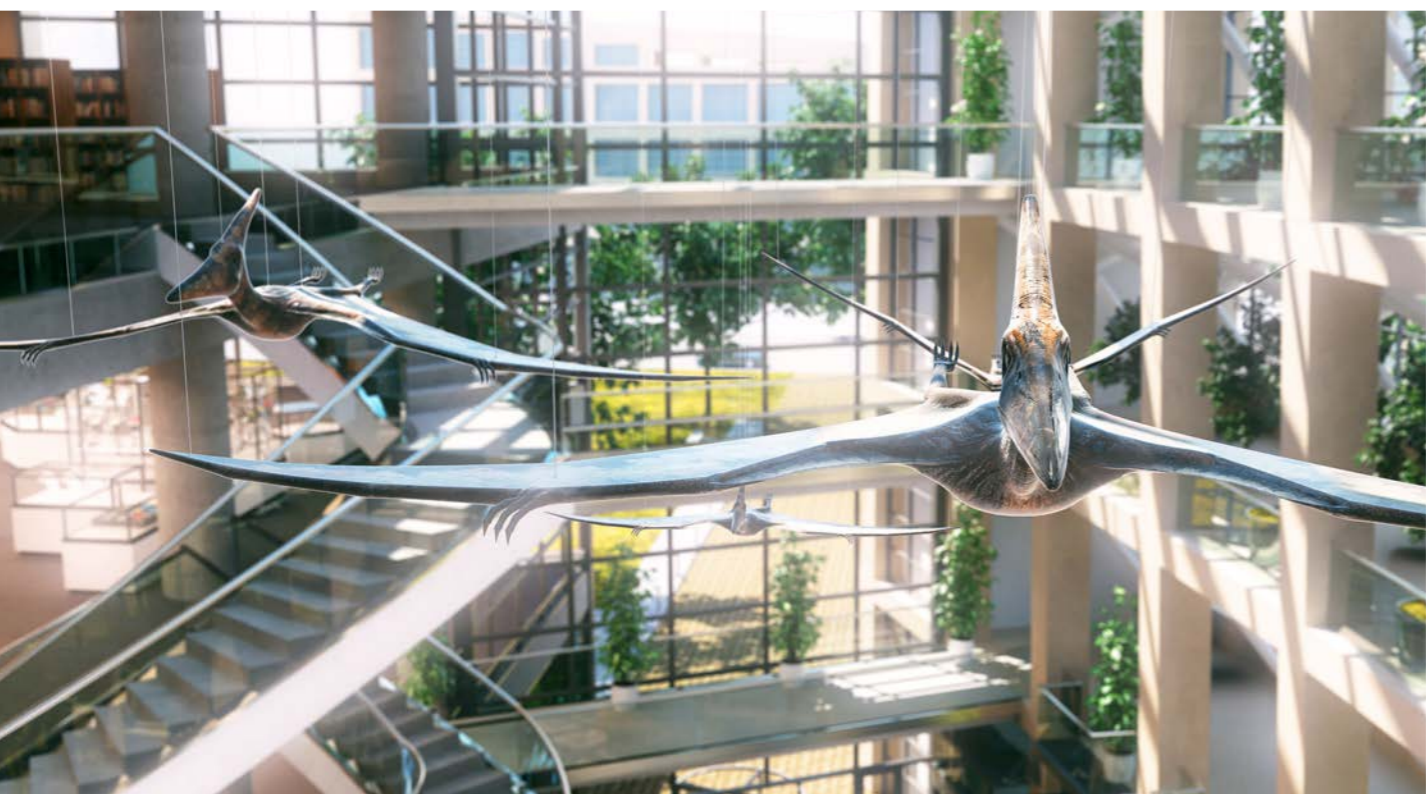


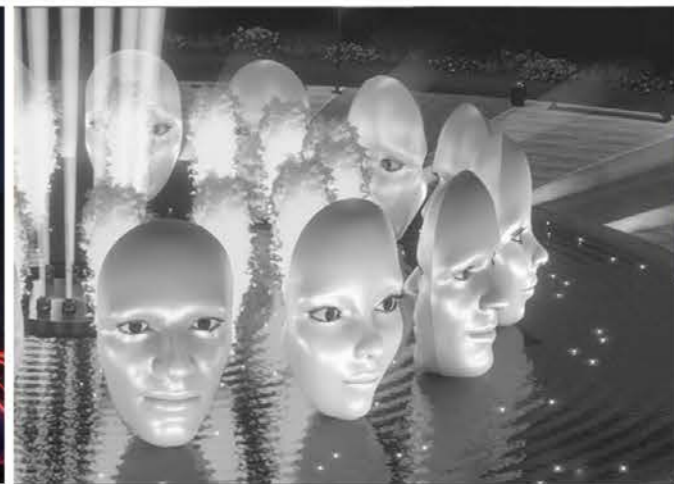
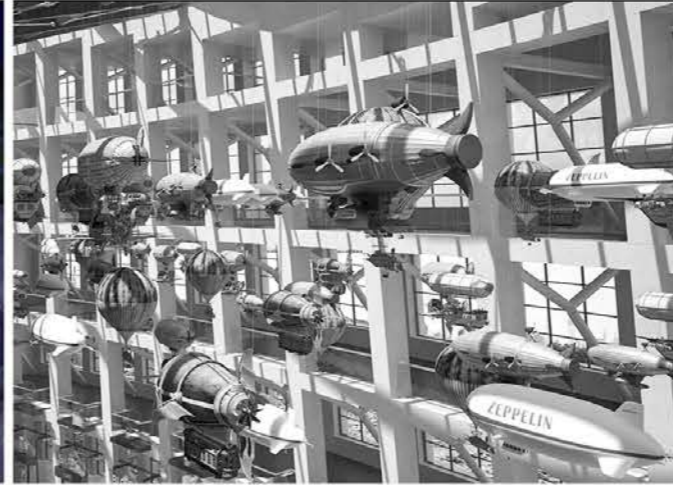


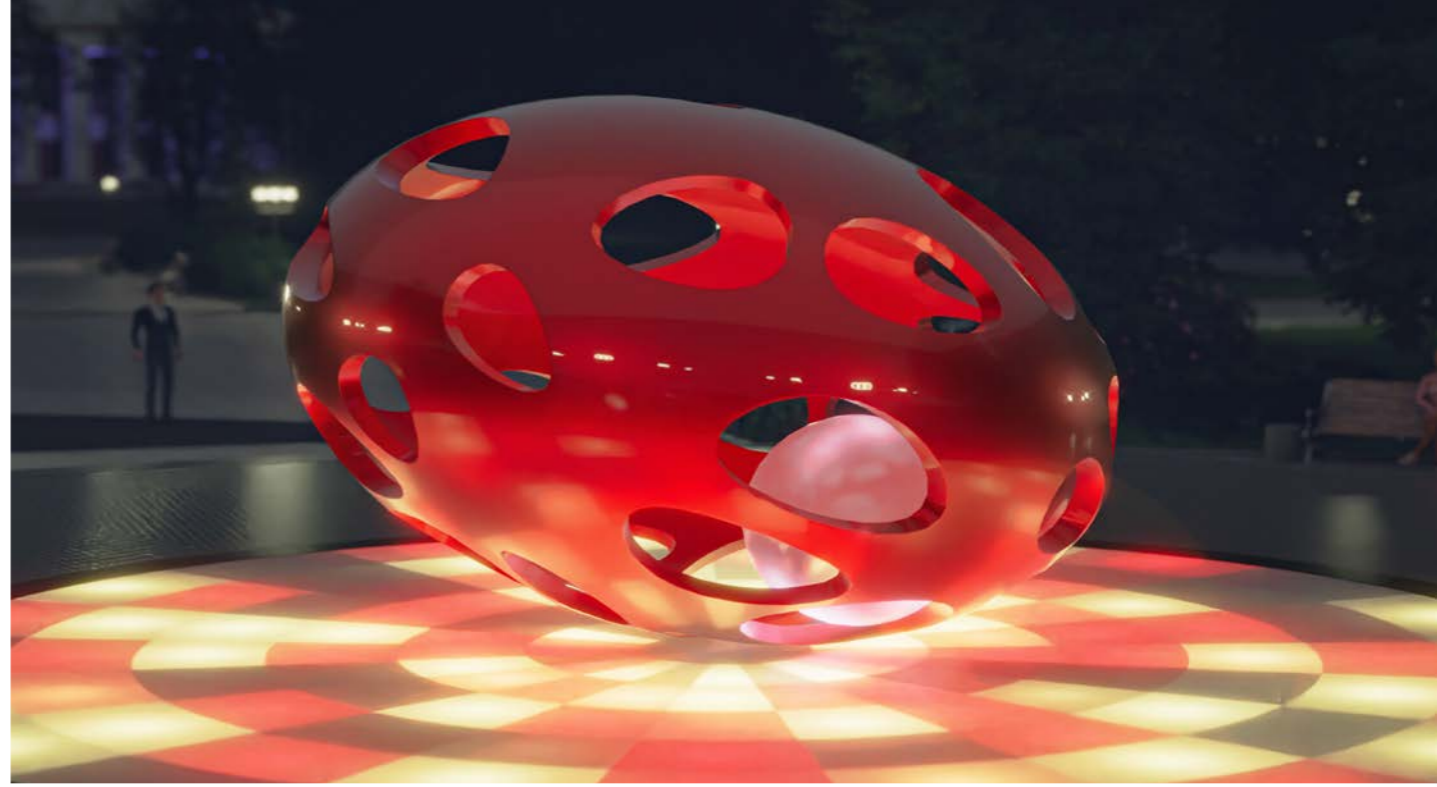


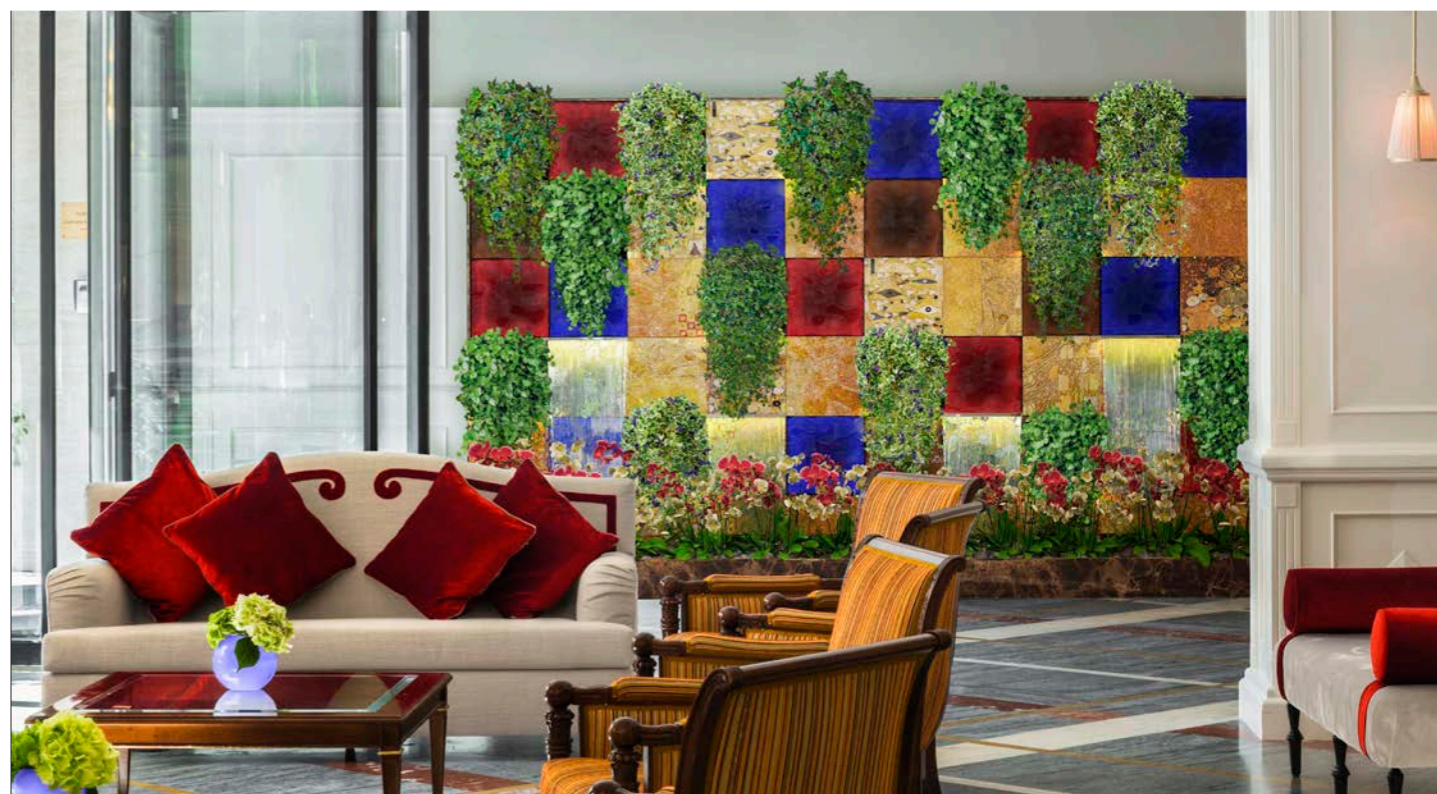
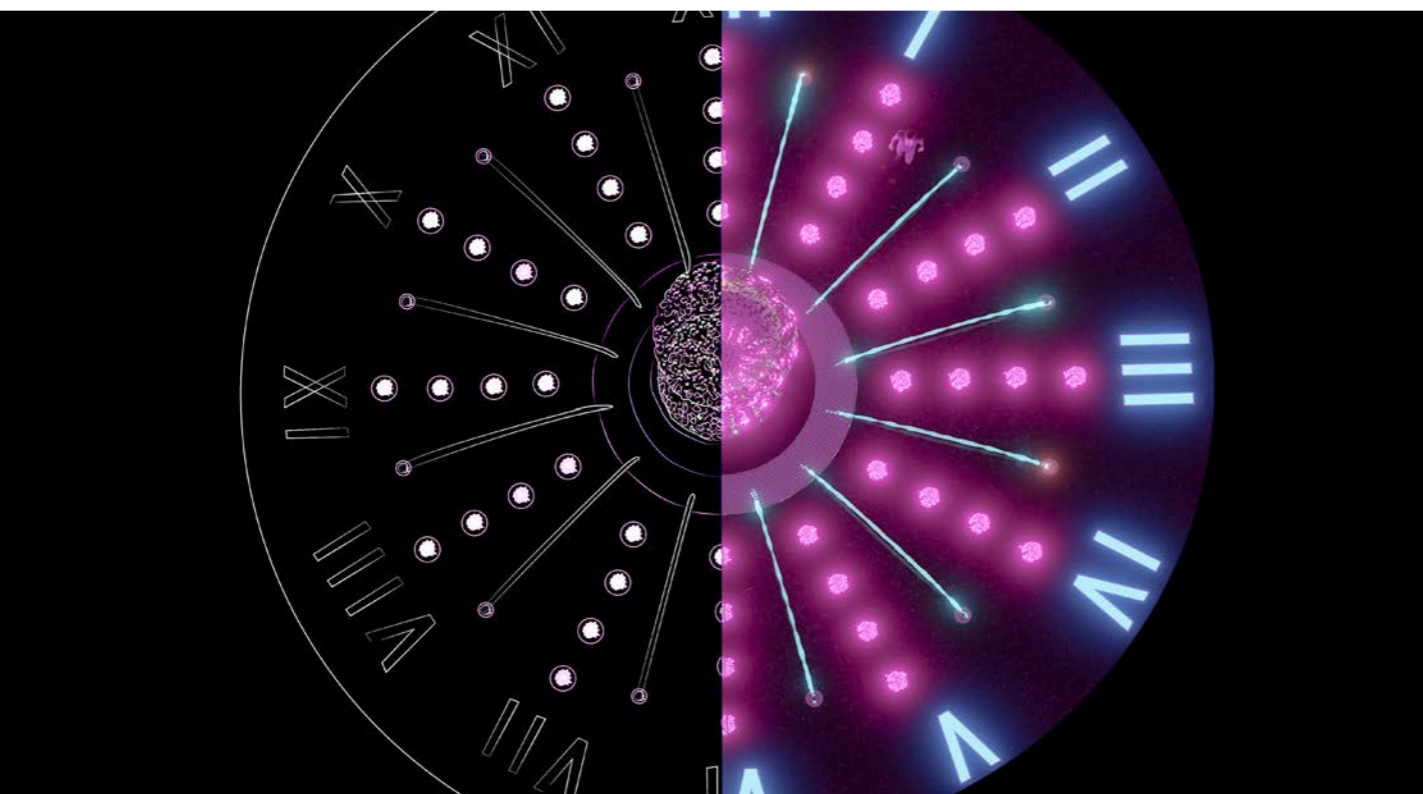




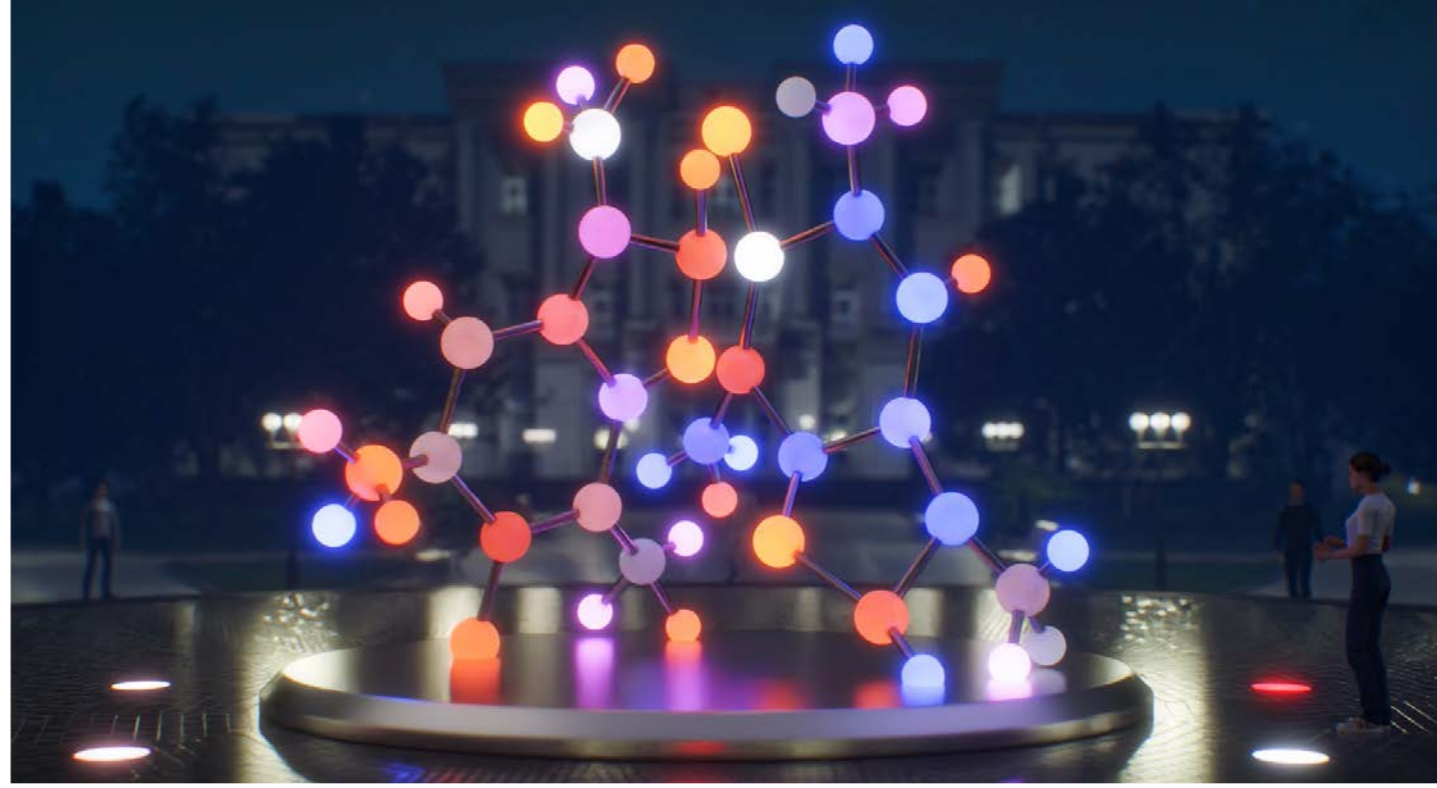




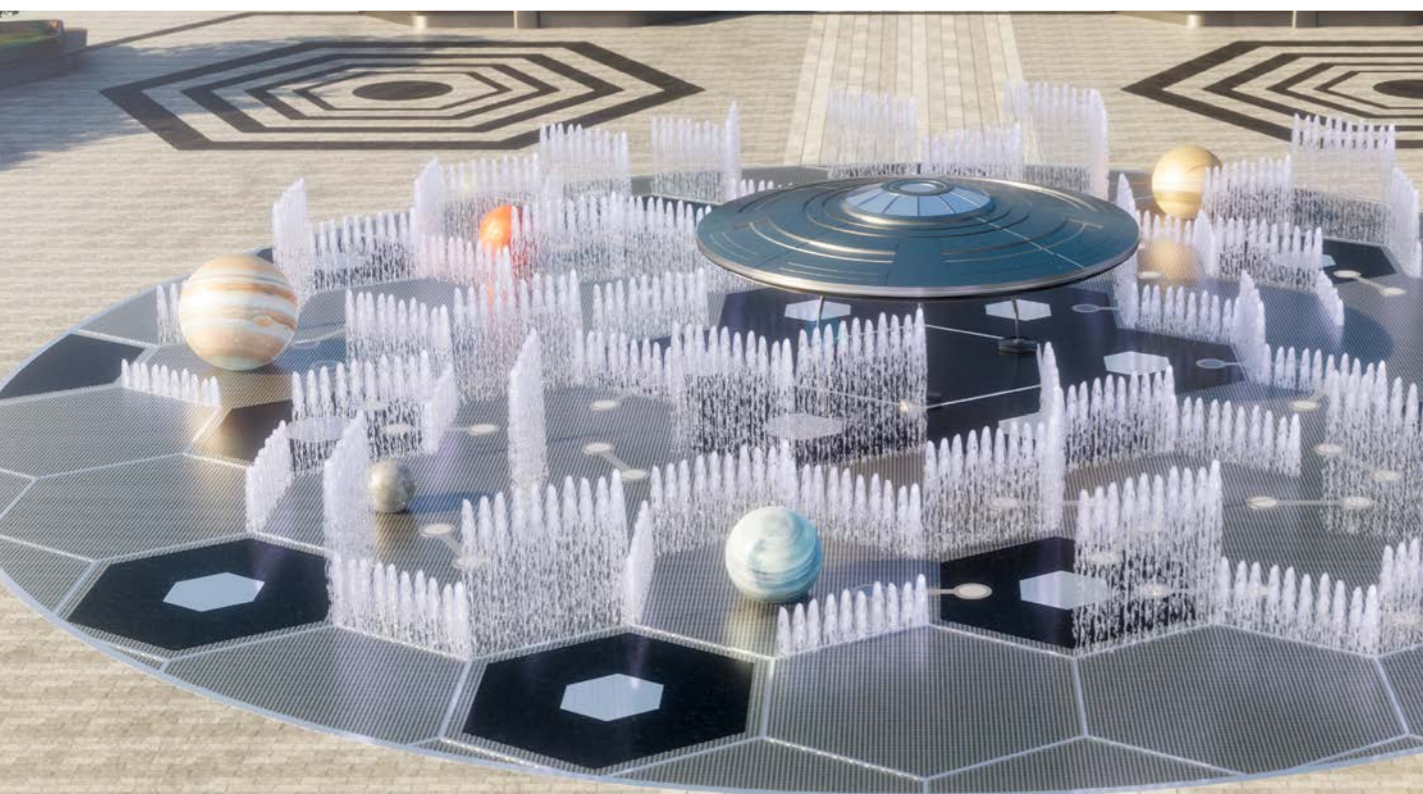


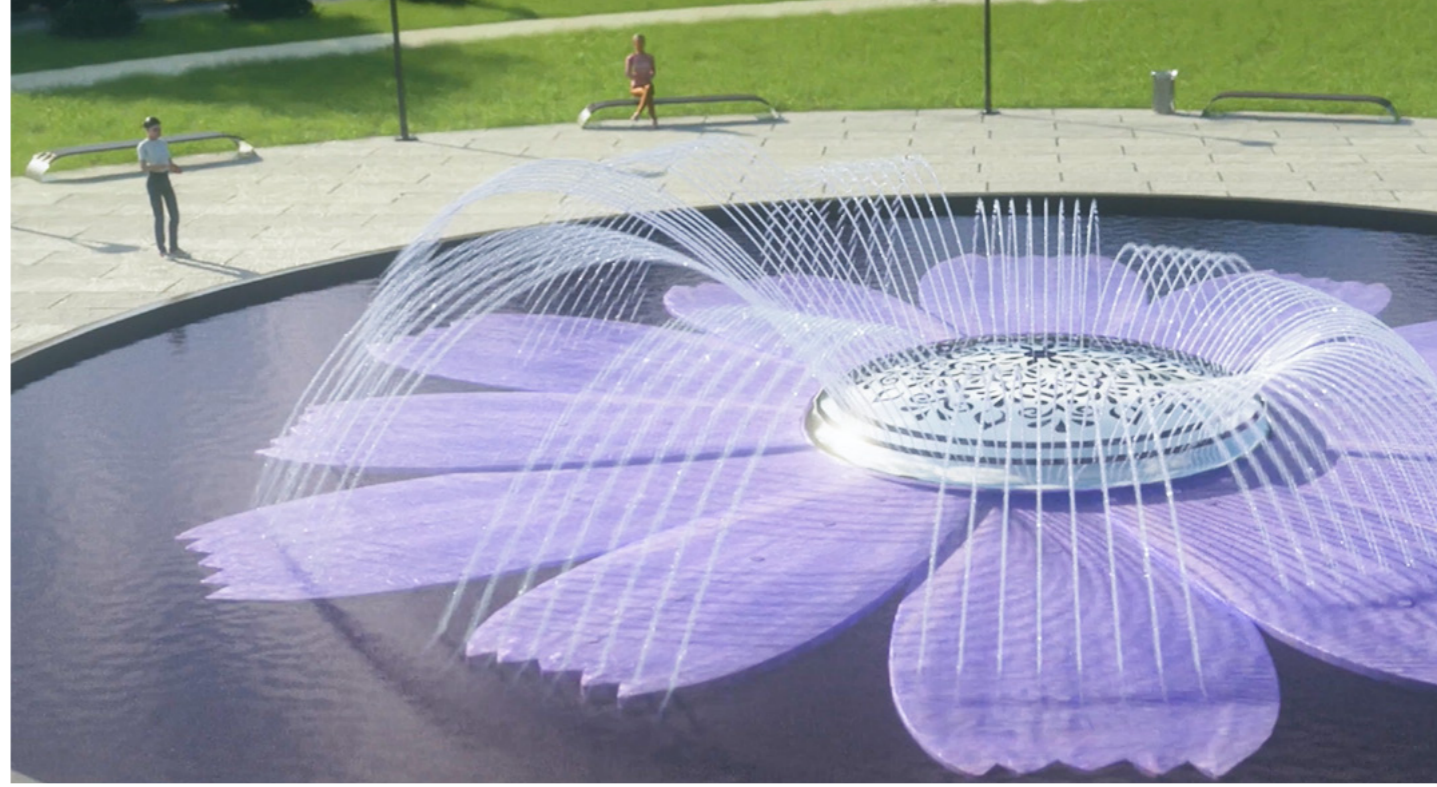
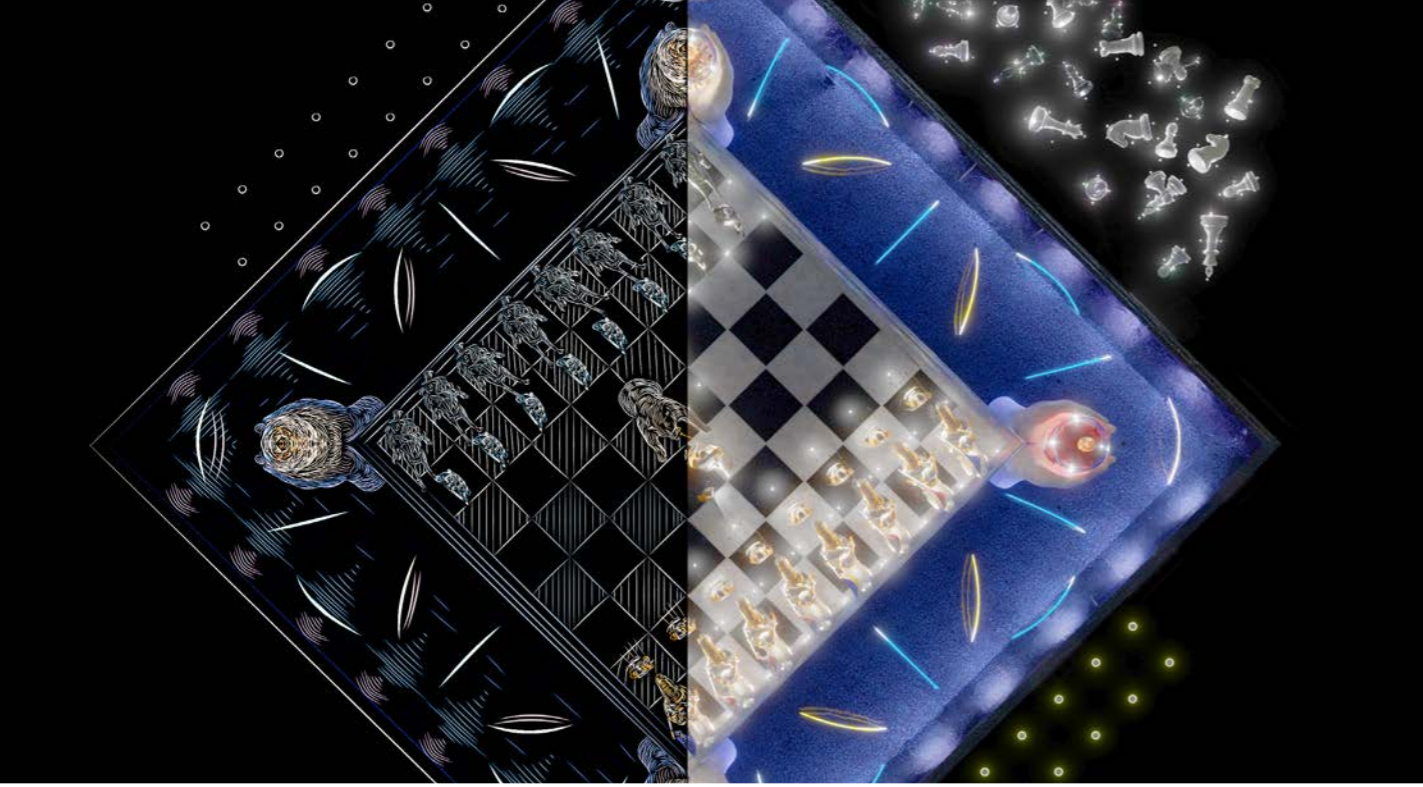
















COMPLETED

1	6	7
----------	----------	----------

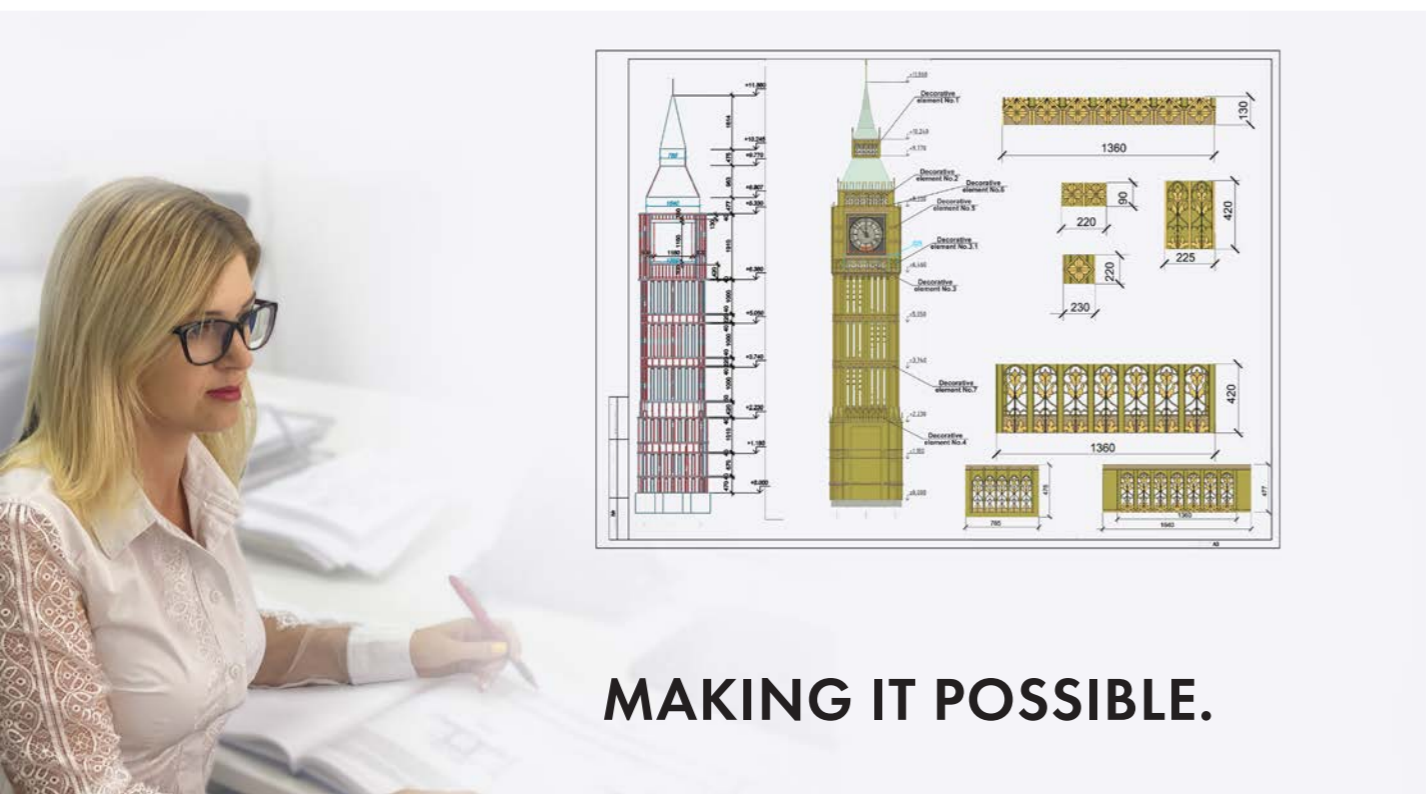




IMAGINE ANYTHING.



VISUALIZE YOUR PROJECT.



MAKING IT POSSIBLE.



LET'S GET IT DONE!



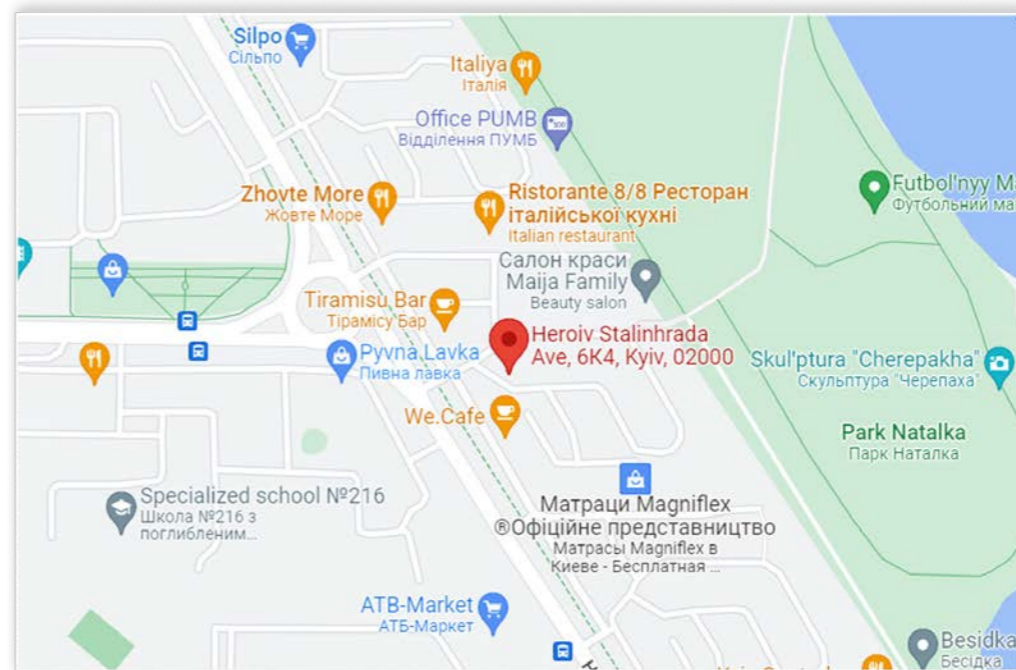
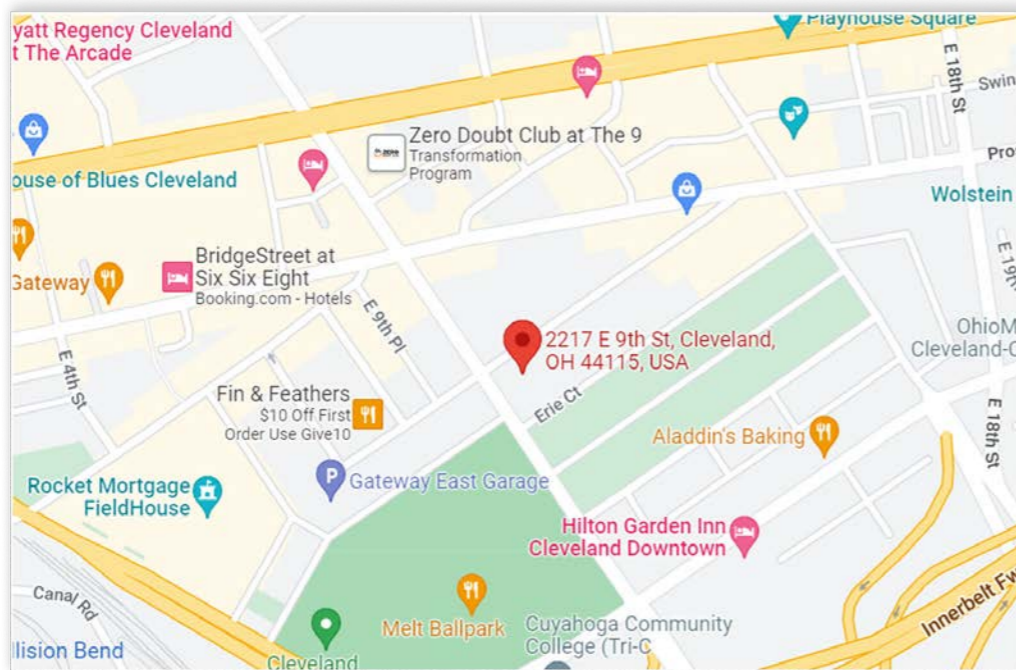
Each of our works makes the world brighter!

EUROPE

2217 EAST 9TH STREET, SUITE 101
CLEVELAND, OHIO 44115
+1-855-323-8980
INFOUS@DION.ART
WWW.DION.ART

EUROPE

GEROEV STALINGRADA 6, BUILDING 4, SUITE 1
KIEV, UKRAINE 04210
+380(44) 225-2-225
INFOEU@DION.ART
WWW.DION.ART



*Let's create something
beautiful together!*

Your DION ART.